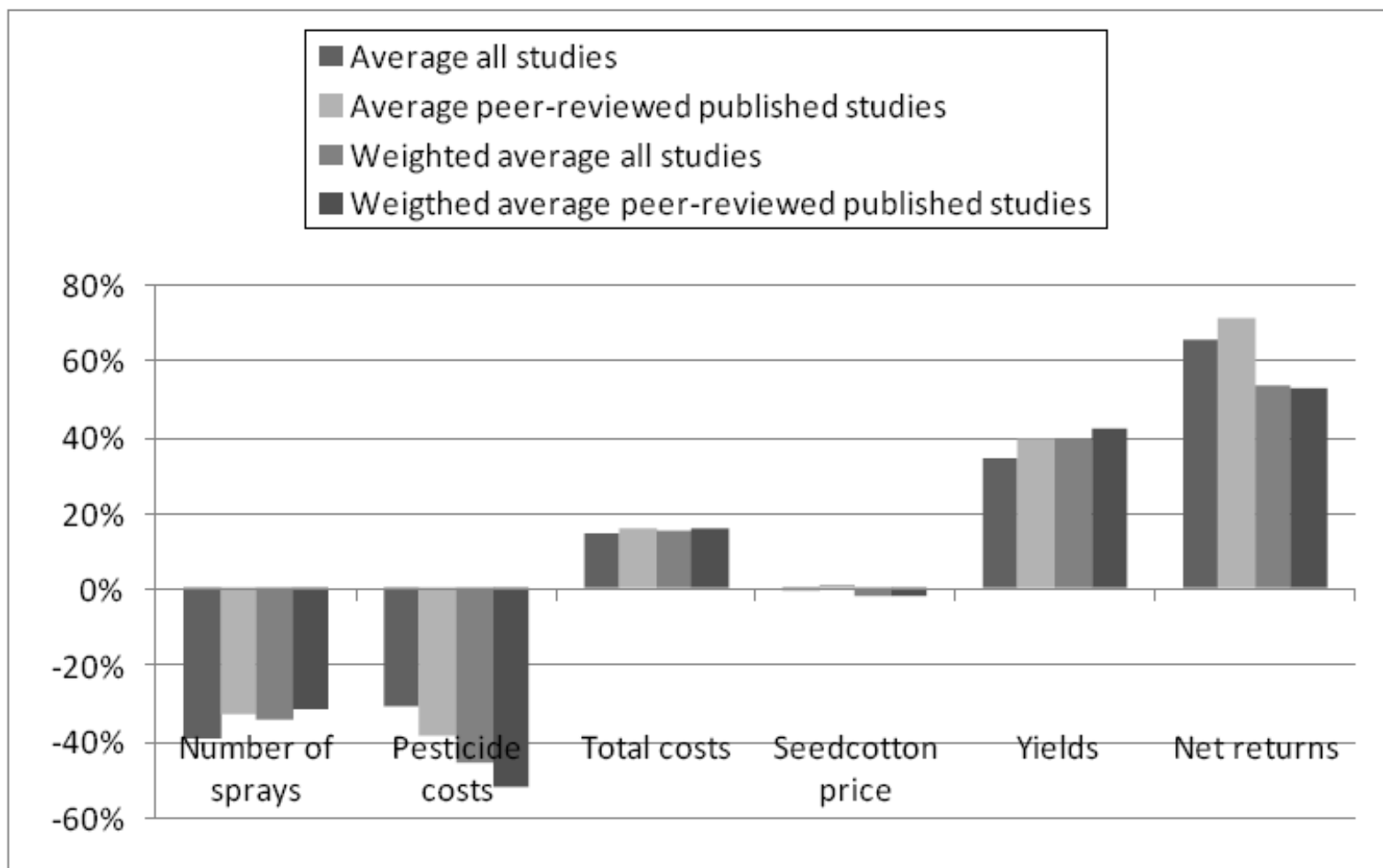


Figure 10. Results of the meta-analysis: Average economic effects of Bt cotton compared to non-Bt cotton in India, 2002/03-2004/05



Source: Compiled by authors based on peer-reviewed studies.

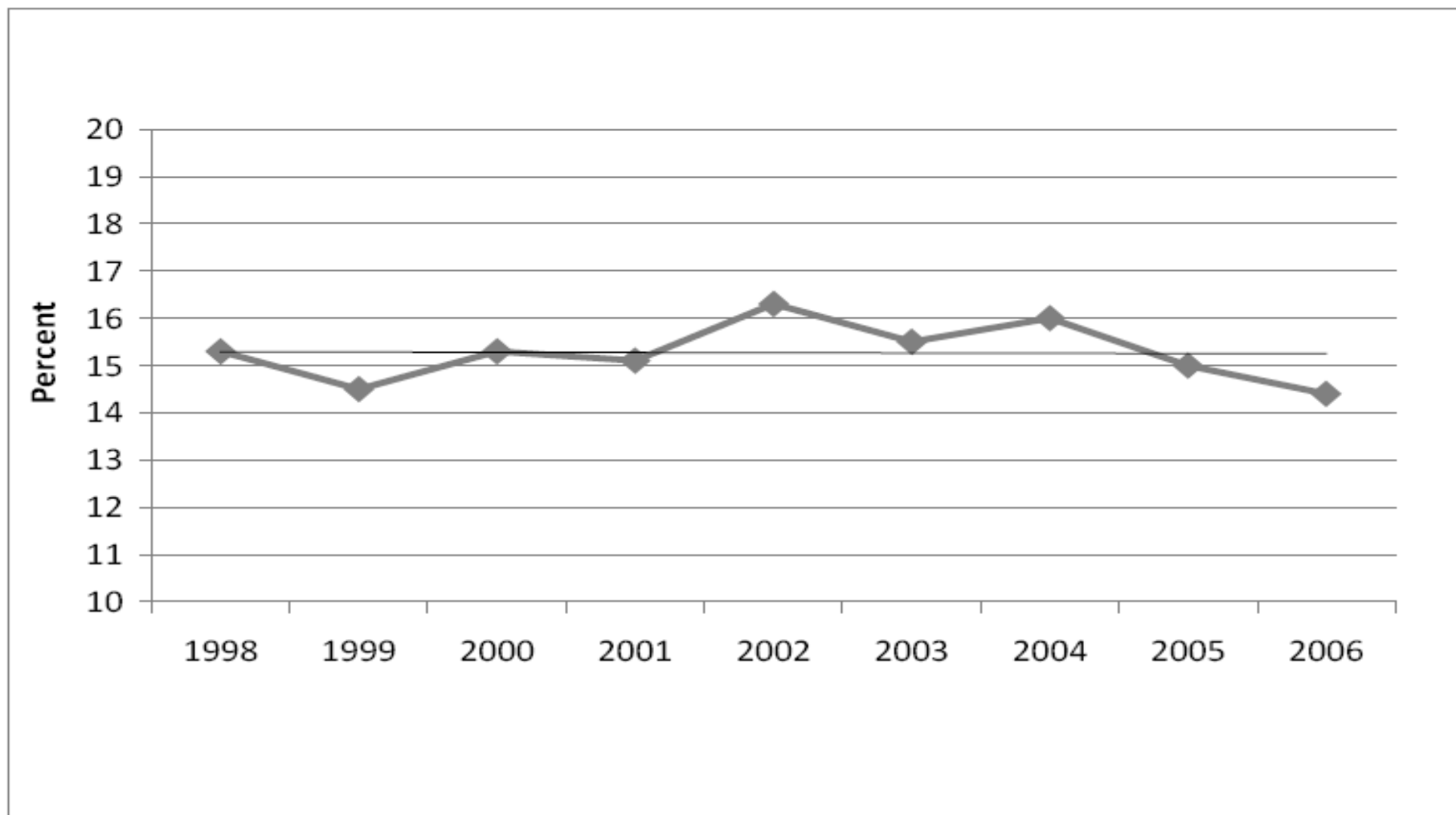
Gruère Guillaume P., Mehta-Bhatt Purvi, & Debdatta Sengupta (2008)

Bt Cotton and Farmer Suicides in India Reviewing the Evidence, IFPRI Discussion Paper 00808, Environment and Production Technology Division pp 64 IFPRI Discussion Paper 00808 Washington (Report)

<http://www.botanischergarten.ch/Cotton/Gruere-IFPRIDP200810.pdf> AND

<http://www.ifpri.org/pubs/dp/IFPRIDP00808.pdf>

Figure 2. Share of farmer suicides in total Indian suicides (1997-2006)



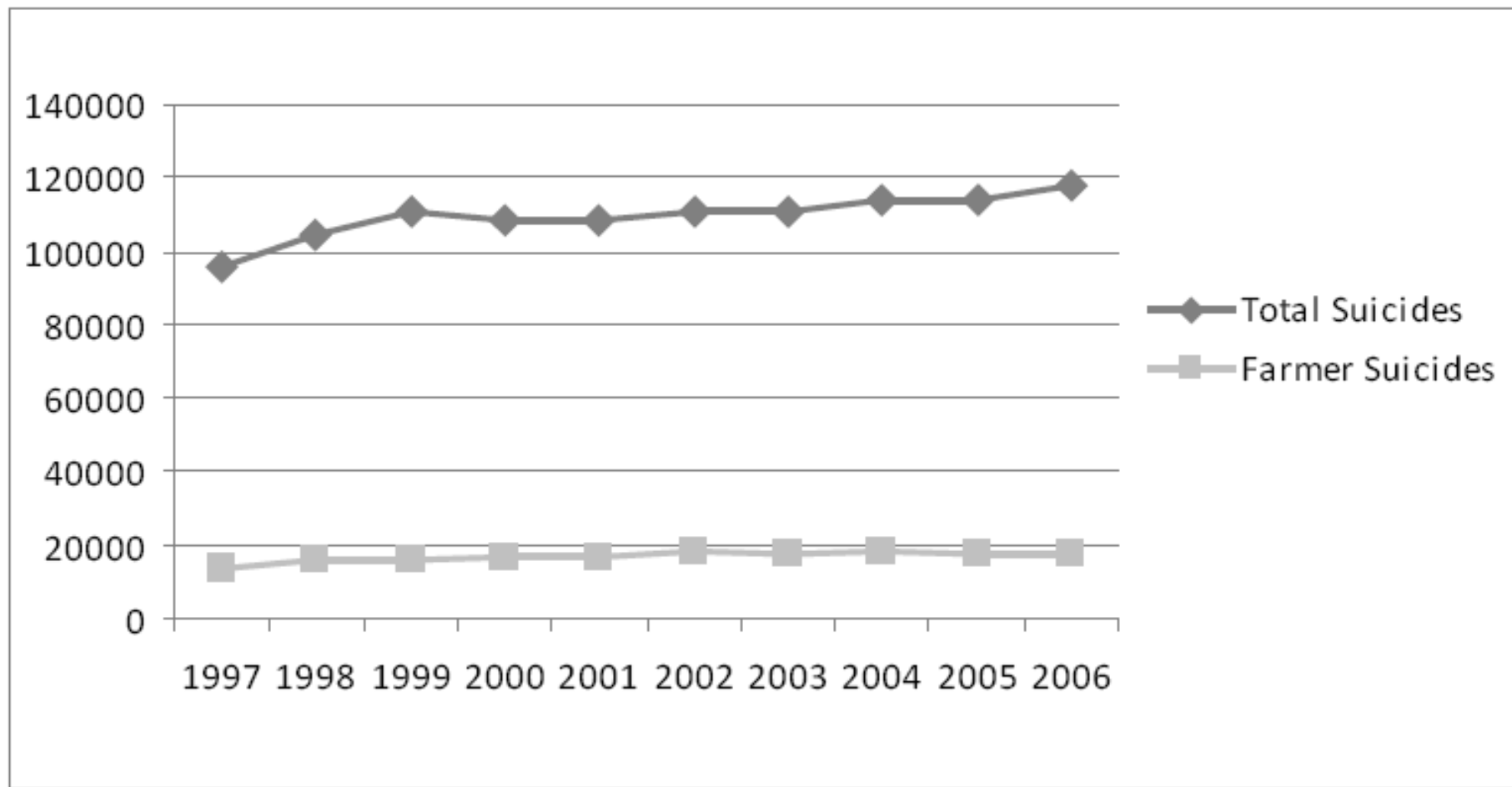
Source: NCRB various years.

Gruère Guillaume P., Mehta-Bhatt Purvi, & Debdatta Sengupta (2008)

Bt Cotton and Farmer Suicides in India Reviewing the Evidence, IFPRI Discussion Paper 00808, Environment and Production Technology Division pp 64 IFPRI Discussion Paper 00808 Washington (Report)

<http://www.botanischergarten.ch/Cotton/Gruere-IFPRIDP200810.pdf> AND <http://www.ifpri.org/pubs/dp/IFPRIDP00808.pdf>

Figure 1. Farmer and total suicides in India, 1997-2006



Source: NCRB various years.

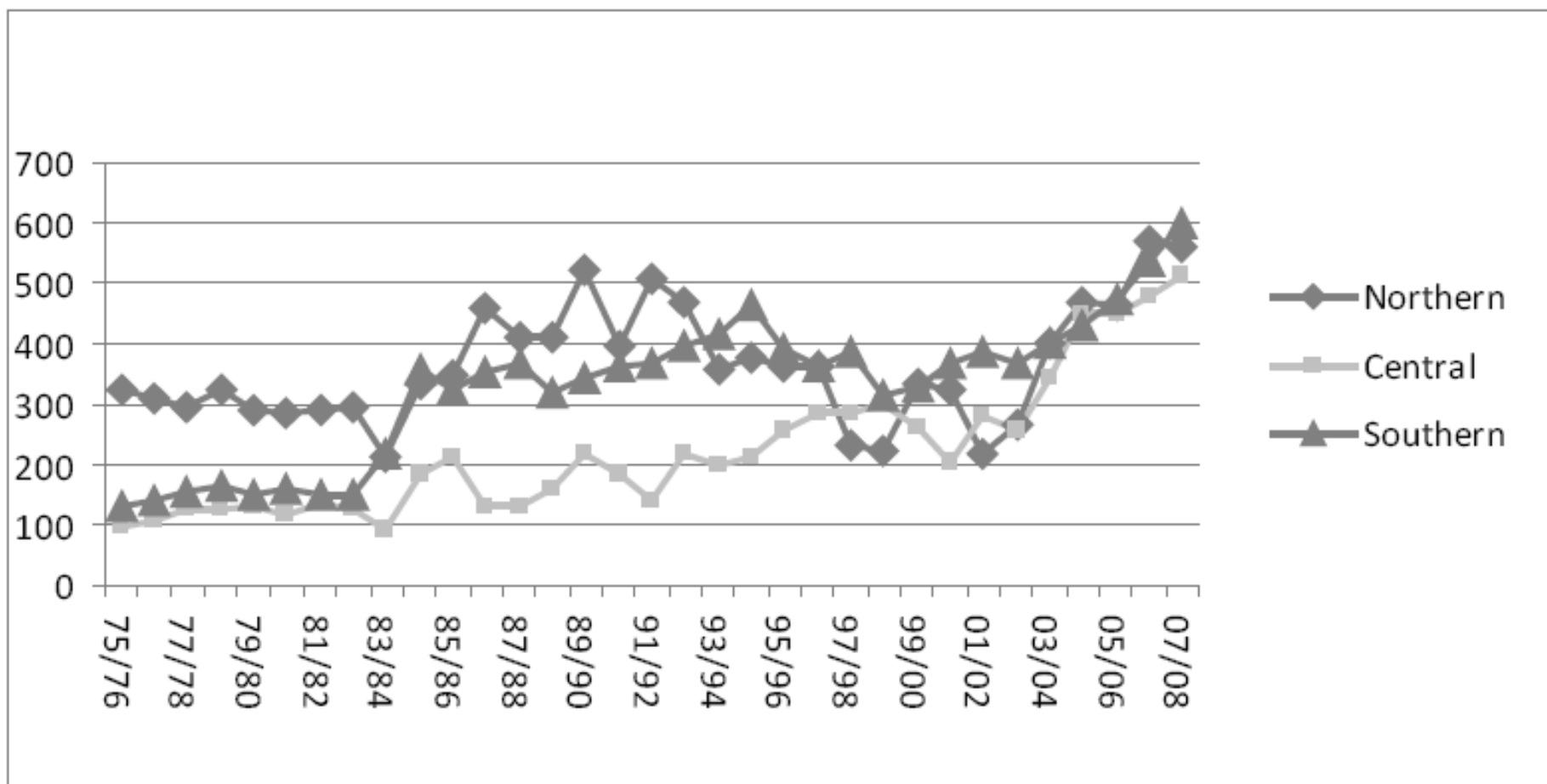
Gruère Guillaume P., Mehta-Bhatt Purvi, & Debdatta Sengupta (2008)

Bt Cotton and Farmer Suicides in India Reviewing the Evidence, IFPRI Discussion Paper 00808, Environment and Production Technology Division pp 64 IFPRI Discussion Paper 00808 Washington (Report)

<http://www.botanischergarten.ch/Cotton/Gruere-IFPRIDP200810.pdf> AND

<http://www.ifpri.org/pubs/dp/IFPRIDP00808.pdf>

Figure 8. Average cotton yields by region in India (kg/ha), 1975-2007



Source: Directorate of Cotton Development, Government of India (2008); East India Cotton Association.(2008).

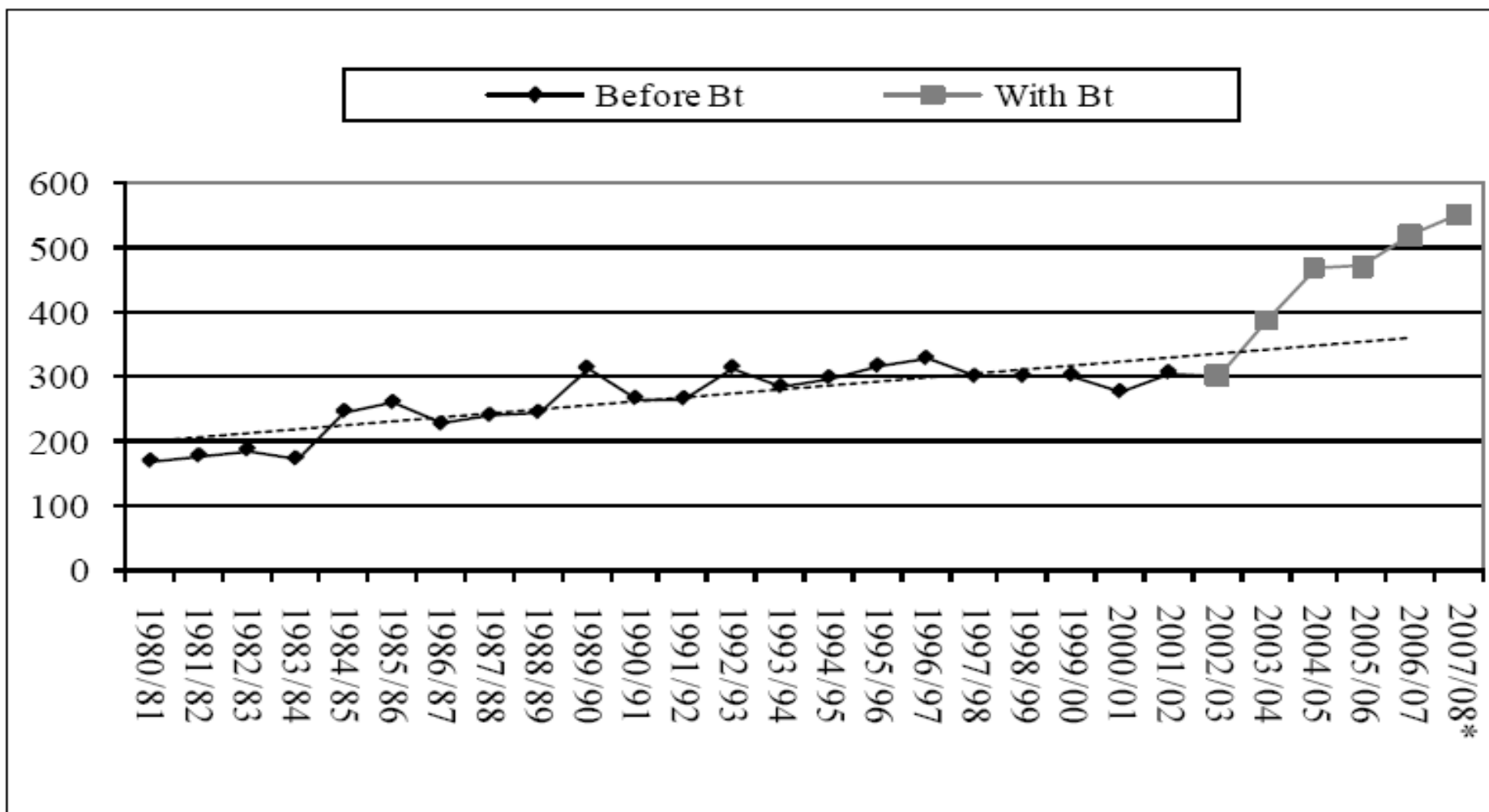
Gruère Guillaume P., Mehta-Bhatt Purvi, & Debdatta Sengupta (2008)

Bt Cotton and Farmer Suicides in India Reviewing the Evidence, IFPRI Discussion Paper 00808, Environment and Production Technology Division pp 64 IFPRI Discussion Paper 00808 Washington (Report)

<http://www.botanischergarten.ch/Cotton/Gruere-IFPRIDP200810.pdf> AND

<http://www.ifpri.org/pubs/dp/IFPRIDP00808.pdf>

Figure 7. Average cotton yields in India (kg/ha), 1980-2007



Source: International Cotton Advisory Committee (2008).

Note: Data for 2007/08 is an estimate.

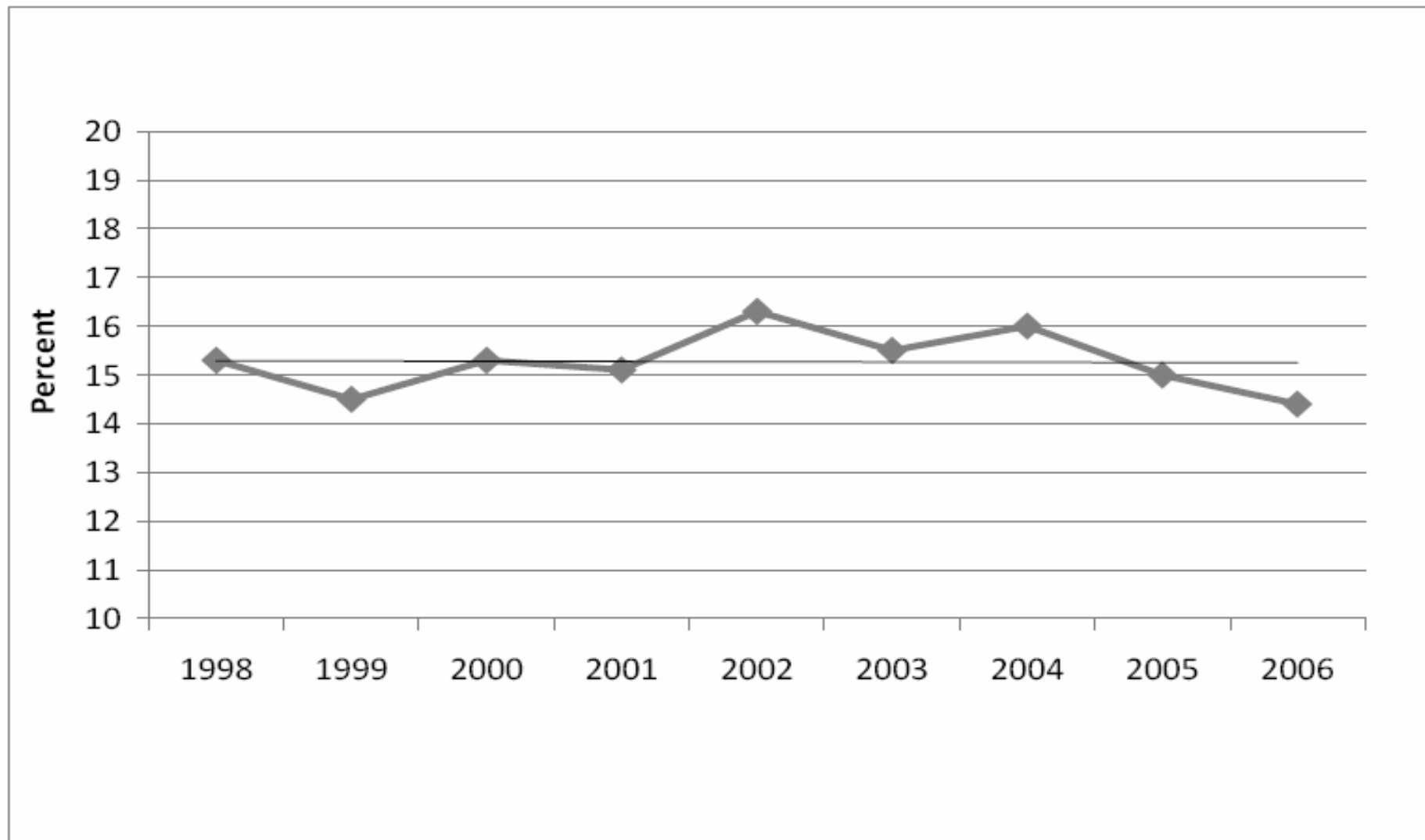
Gruère Guillaume P., Mehta-Bhatt Purvi, & Debdatta Sengupta (2008)

Bt Cotton and Farmer Suicides in India Reviewing the Evidence, IFPRI Discussion Paper 00808, Environment and Production Technology Division pp 64 IFPRI Discussion Paper 00808 Washington (Report)

<http://www.botanischergarten.ch/Cotton/Gruere-IFPRIDP200810.pdf> AND

<http://www.ifpri.org/pubs/dp/IFPRIDP00808.pdf>

Figure 2. Share of farmer suicides in total Indian suicides (1997-2006)



Source: NCRB various years.

Gruère Guillaume P., Mehta-Bhatt Purvi, & Debdatta Sengupta (2008)

Bt Cotton and Farmer Suicides in India Reviewing the Evidence, IFPRI Discussion Paper 00808, Environment and Production Technology Division pp 64 IFPRI Discussion Paper 00808 Washington (Report)

<http://www.botanischergarten.ch/Cotton/Gruere-IFPRIDP200810.pdf> AND <http://www.ifpri.org/pubs/dp/IFPRIDP00808.pdf>