

GREENPEACE

# 2010/2011 annual report



# GREENPEACE

## MISSION STATEMENT

GREENPEACE IS THE LEADING INDEPENDENT CAMPAIGNING ORGANIZATION THAT USES PEACEFUL PROTEST AND CREATIVE COMMUNICATION TO EXPOSE GLOBAL ENVIRONMENTAL PROBLEMS AND TO PROMOTE SOLUTIONS THAT ARE ESSENTIAL TO A GREEN AND PEACEFUL FUTURE.

## Charity Rankings

Greenpeace Fund is consistently ranked among the nation's top charities—for our achievements and for the high percentage of revenue that goes directly towards the protection of the planet.

Greenpeace Fund is proud to meet all of the BBB Wise Giving Alliance Standards for Charity Accountability.

Greenpeace Fund is recognized by Charity Navigator as having demonstrated excellent financial efficiency.

Greenpeace Fund is proud to be a top-rated environmental charity by the American Institute of Philanthropy with an "A-."

Greenpeace Fund is proud to be part of the CFC and to carry the "Best in America" seal from Independent Charities of America. Of the 1,000,000 charities operating in the United States today, it is estimated that fewer than 50,000, or 5 percent, meet or exceed these standards, and, of those, fewer than 2,000 have been awarded this Seal.

## GREENPEACE, INC. 2010 BOARD OF DIRECTORS

Donald Ross, Chair  
Valerie Denney  
Elizabeth Gilchrist  
David Hunter  
Sharyle Patton  
David Naguib Pellow  
Dan Rudie  
Bryony Schwan  
Jigar Shah  
Karen Topakian

### Additional Officers

Philip D. Radford, Executive Director  
Thomas W. Wetterer, Secretary

## GREENPEACE FUND, INC. 2010 BOARD OF DIRECTORS

David Chatfield, Chair  
Elizabeth Gilchrist  
Jeffrey Hollender  
Ellen McPeake  
John Willis

### Additional Officers

Philip D. Radford, Executive Director  
Daniel McGregor, Secretary

# Contents

<b>4-5</b>	Letter from the Executive Director
<b>6</b>	Greenpeace Around the World
<b>7</b>	Nuclear: Lessons Not Learned
<b>8-11</b>	Climate
<b>12-15</b>	Forests
<b>16-19</b>	Oceans
<b>20-21</b>	Dirty Energy's Dirty History
<b>22-25</b>	The Rainbow Warrior
<b>26-27</b>	Financials
<b>28-29</b>	Create Your Legacy for the Earth
<b>30-45</b>	Donors



# Letter from the Executive Director

“ I could not, at any age, be content to take my place in a corner by the fireside and simply look on. ”

— Eleanor Roosevelt



## This year, Greenpeace turns 40.

Forty years of pushing boundaries, and refusing to back down. Forty years of working to protect the environment and educating people – from elementary school students to world leaders – about what’s at stake and what must be done to ensure a better, greener future. Together, we have accomplished a great deal.

Over the course of four decades, we – our supporters, volunteers, researchers, activists and experts – have helped stop nuclear testing. We convinced most of the world’s leaders to prohibit the commercial slaughter of whales. We secured an international agreement to protect Antarctica. We’ve stopped destructive logging in some of the world’s most important forests, including the Great Bear Rainforest in Canada.

Greenpeace has mobilized millions and millions of people – of all ages and from every corner of the globe – to take action to protect our environment.

Everyone who has put their heart and soul into a Greenpeace campaign over these past 40 years now knows that empowering a vital, sustainable future takes time, persistence, and perspective. That’s why we’re not brought low by a temporary obstacle, a malicious act, or a misguided decision by those in power, because we believe so deeply in our fundamental mission and the work that must be done.

During our 40 years we’ve learned that people, acting together, can successfully fight back against the powerful and, through exposing them, can call on them to stop environmental crimes and become responsible stewards for our planet.

But, even as we celebrate this remarkable milestone in the life of this organization – this landmark birthday – that doesn’t mean that we’re slowing down. If anything, we’re accelerating the work that we’re doing, tackling ever larger issues and focusing the eyes of the world both on the environmental threats we face and the important opportunities we can’t let pass us by.

In 2011, we will continue to press for protections for our oceans, preventing the eco-system devastation that is caused by reckless fossil fuel exploitation, unsustainable fishery practices and so-called research whaling. We’re looking toward a day when the U.S. can be free of the political influence and polluting impacts of coal-fired power plants and when the countless creatures and human beings who depend on the survival of the world’s dwindling intact forest landscapes can live without fear. We want to put an end to the false promises of “safe” nuclear power and demand security measures that will prevent millions from being harmed by attacks on currently vulnerable chemical plants.

In a world that is more globally intertwined and faster paced than the one in 1971, there is a need for someone to blow the whistle, give a voice to what has gone wrong and stand up for what is right. So, we at Greenpeace, here in the United States and around the world, are still going to be challenging people’s beliefs about what needs to be done to protect our Earth. We’ve always done things a little differently and we don’t intend to stop now.

That handful of activists who set out in a leaky boat to stop nuclear testing has grown, over these 40 years, to millions of activists around the world who are just as fierce and determined as our founders.

Today, they are supported by offices in 41 countries, their voices amplified through an organization with a presence on every major continent in the world and a fleet of land, air and sea vessels that help empower our scientific research, engage Greenpeace supporters and instigate true change and action. From the *Phyllis Cormack* to the *A.E. Bates* airship and, soon, to our first custom ship, the *Rainbow Warrior III*, Greenpeace is embracing a new world of possibilities.

We’ve honed our skills to launch sophisticated campaigns that combine Greenpeace’s tried-and-true approaches to foment ground-breaking change with cutting-edge analysis, fearless engagement and forward-thinking use of online and social media tools. The passion that launched that first mission to stop the underground testing of nuclear weapons at Amchitka Island off the coast of Alaska, where those first campaigners placed themselves in harm’s way, is now matched by expertise in scientific research, corporate investigations and creative communications.

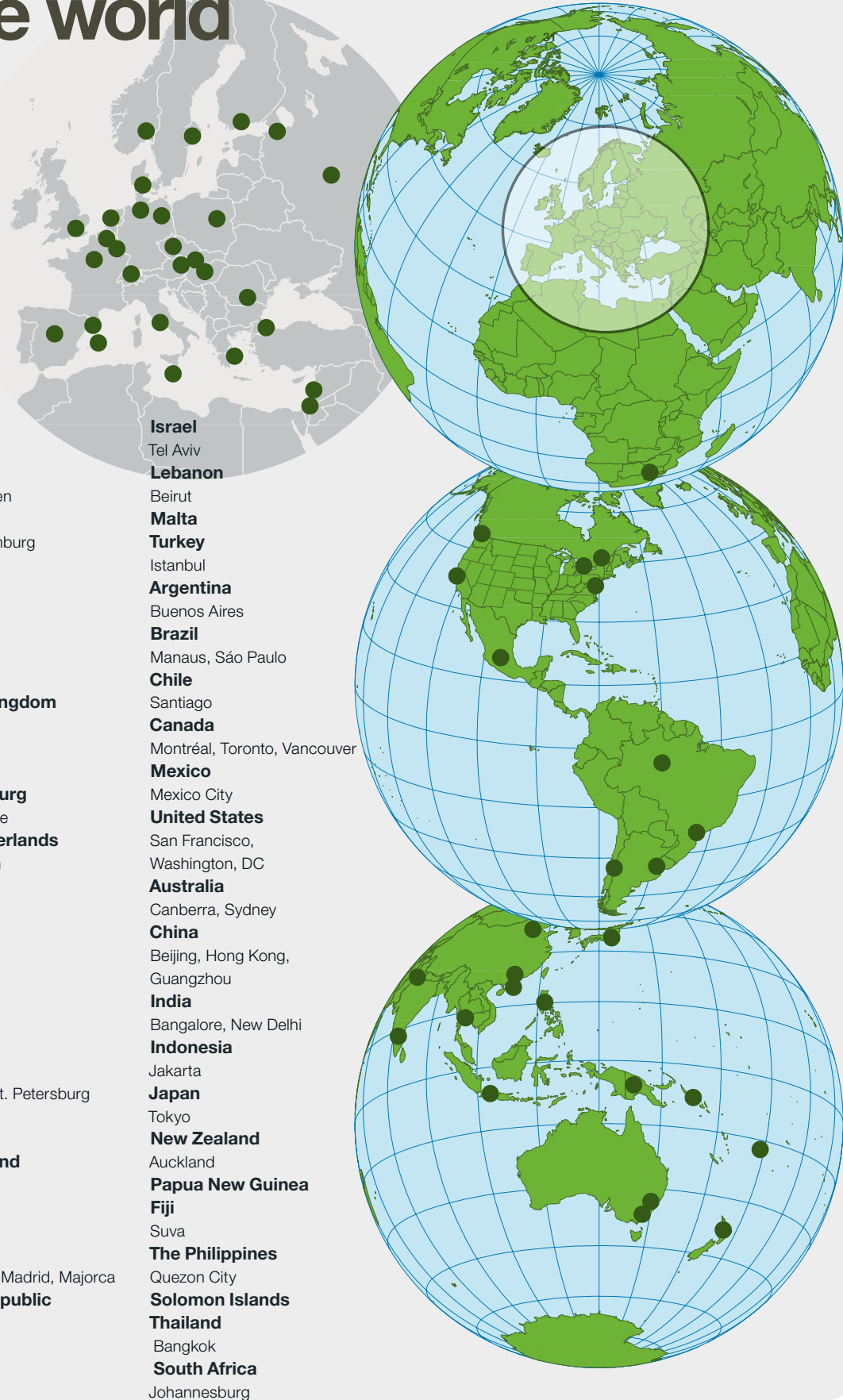
Looking forward, all of us at Greenpeace today are as determined as ever to make the green, peaceful future our founders dreamed of a bold reality. That’s not just because we’ve got 40 years of accomplishments under our belt. It’s because we’ve got committed supporters like you to inspire us.

For a Green, Peaceful Future,

Philip D. Radford  
Executive Director



# Greenpeace around the world



# Nuclear: Lessons Not Learned

On March 28, 1979, a series of mechanical failures set in motion the accident which the world would later know as, simply, **Three Mile Island**. The core meltdown that took place at the Three Mile Island Nuclear Generating Station would forever re-cast Dauphin County, Pennsylvania as the site of the most significant nuclear power disaster on U.S. soil.

**Three Mile Island**, we were to believe, was an isolated incident. Unfortunately, the warning that this disaster embodied for communities across the world was never heeded.

The hollow assurances continued, and sounded much the same, after **Chernobyl**, which followed in 1986, where 100 times more radiation than was released by the atom bombs dropped over Hiroshima and Nagasaki flooded Western Russia, Belarus, and the Ukraine.

And now, added to that grim list of lessons not learned is the **Fukushima Daiichi Nuclear plant**. As workers battled one crisis after another (including hydrogen explosions, the partial meltdown of three nuclear reactors and damage to the radioactive waste pools holding 20 years worth of these deadly wastes) the world once again witnessed the failed promise of nuclear power and, once again, heard the patently false claims that nuclear power poses no threat to the public.

In fact, just ten days into the crisis in Japan, the U.S.'s Nuclear Regulatory Commission (NRC) approved an operating license renewal for the **Vermont Yankee** nuclear plant, which has repeatedly been cited for major safety violations. The NRC's decision to grant a license renewal occurred after Greenpeace worked alongside Vermont residents to convince state representatives to shut the accident-plagued **Vermont Yankee** down for good.

Vermonters are not the only people at risk from another nuclear meltdown. On April 26, 2011, the **25th anniversary of the Chernobyl** nuclear disaster, travelers going through New York's bustling Grand Central Station were greeted with a banner held above the crowd by Greenpeace activists. The banner read "**Chernobyl. Fukushima. Indian Point?**" and included a graphic depicting the state of New York with the nuclear symbol over the Indian Point nuclear power plant's location. The banner and protest were meant as a sober warning of the grave danger posed by the continued operation of aging nuclear power plants here in the U.S.

The stark and terrible truth is that few Americans are safe from another nuclear disaster. **Some 17 million people live within 50 miles of New York's Indian Point power plant**, a nuclear facility that actually sits in an active seismic zone north of New York City. And as a video released by Greenpeace reminded viewers, one in three Americans live within 50 miles of a nuclear plant.

As an organization, Greenpeace was founded on the understanding of the immense threat posed by nuclear technology used recklessly without fear for the destruction it can cause. Greenpeace has no choice but to do all it can to ensure that those in authority will finally heed the warnings and act responsibly with a new commitment toward a true clean energy future.



# climate



# climate



“We know coal ash is toxic, we know it destroys communities, and we know that the coal industry has continued to push the Environmental Protection Agency (EPA) to do nothing about it. The EPA needs to stop dragging its feet. This is a national problem that demands a national response. People’s lives are at risk...”

— Robert Gardner, Coal Campaigner

## QUIT COAL

Global warming, and the industrial pollution that drives it, is the paramount environmental threat of our time. The real, visceral impacts can be seen in dying coral reefs, severe weather patterns, disintegrating polar ice, rising sea levels and fatal heat waves. There is not a single habitat, species, or community unaffected, which is why global warming has been, and continues to be, a priority campaign of Greenpeace, both in the U.S. and internationally.

2010 marked the start of a new chapter in Greenpeace’s campaigning for clean energy solutions and its call for the U.S. to take responsibility for its outsized contribution to greenhouse gas pollution and global warming. Greenpeace turned its focus to building a national movement to end coal’s influence over our energy future by engaging, educating and empowering citizens to shut down the oldest and dirtiest coal-fired plants – of which there are more than 600 in operation – that are poisoning communities and sending families and their neighbors to the hospital.

Greenpeace’s approach is an exciting evolution of our global warming work, capitalizing on our capacity and skill for mobilizing millions of people, while lending expertise and resources to citizen-led grassroots activities across the country. We are working at the local and regional level – investing in individual communities while raising awareness of the influence that the coal industry has over our regulators and policymakers.

For each community we are working in, the goal is the same: shut down dirty and old coal-fired plants. But the needs and motivations of each community are different. In Los Angeles residents are fighting for the city to be on the leading edge of a clean energy revolution. In Chicago, it’s about reviving neighborhoods by closing the doors on two of the dirtiest coal-fired plants in the country.

At the very beginning of 2011, Greenpeace kicked off our new coal campaign with a month-long ship expedition up the East Coast – starting on January 20th and ending February 22nd – during which Greenpeace campaigners visited Bridgeport, Connecticut; Philadelphia; Ocean City, New Jersey; New York City; and Boston.

Brian Merchant – a reporter with *Treehugger* who travelled with the Greenpeace crew on the Coal Free Future ship tour – noted the importance of this first step in a new grassroots movement. He wrote:

“[E]ngaging coal head-on with a major activist movement is one of the few options left on the table for bringing about major carbon emission reductions in a meaningful way before global warming reaches a tipping point. People need to see coal plants shut down, and they need to understand why it’s happening.”



© RALexey Drovzhinin / Greenpeace





Perhaps more tangibly than in any other fight in which Greenpeace is involved, the fight to shut down coal-fired power plants is directly felt in neighborhoods and communities across the country. Our efforts in Chicago this year exemplify this work and its impact.

As reported in *The Nation*, the Fisk and Crawford coal plants in the city are "... the largest single sources of air pollution in Chicago. Together, these two plants spew thousands of tons of soot, mercury, and oxides of nitrogen and sulfur into the atmosphere and are directly responsible for 42 deaths, 720 asthma attacks and sixty-six heart attacks annually, according to a September 2010 study by the Clean Air Task Force."

But, behind the statistics are people watching their communities rendered unlivable. Cassandra Lopez, a Pilsen

neighborhood resident, told a reporter from *Treehugger* that she and her son had begun experiencing respiratory issues since moving less than a year ago.

She also noted, "We have a garden, down the street, and we're worried about planting anything because of all the lead in the soil. It's already been declared toxic."

On May 25, 2011, Greenpeace activists showed residents of Chicago's Pilsen neighborhood their commitment to seeing the polluting Fisk coal-fired power plant shut down. On that day, eight Greenpeace activists scaled the 450-foot smokestack, occupying the location for more than 26 hours while some of the activists painted "Quit Coal" in bright yellow paint. It was a direct communication to Edison International to retire the Fisk and Crawford plants.

As the team on the smokestack painted the "Quit Coal" message on the Fisk plant, a separate group of activists unfurled a banner from a bridge near the Crawford plant. The action stopped the movement of a barge carrying a coal shipment to the plant and successfully blocked it for four hours. In addition, activists in Chicago and across the country sent more than 20,000 emails to the CEO of Edison International, demanding action to shut down the plants.

A "QUIT COAL" MESSAGE IS PAINTED ON THE SMOKESTACK OF THE FISK COAL-FIRED POWER PLANT IN CHICAGO, AFTER A GROUP OF GREENPEACE ACTIVISTS ENDED A TWO-DAY PROTEST ON THE STACK. THE CLIMBERS WERE SUPPORTED BY LOCAL COMMUNITY ACTIVISTS ON THE GROUND WHO ARE AFFECTED DAILY BY POLLUTION FROM THE PLANT. GREENPEACE IS CALLING ON EDISON INTERNATIONAL SUBSIDIARY MIDWEST GENERATION TO SHUT DOWN THE NEARLY 50-YEAR-OLD FISK PLANT.



© Steve Morgan / Greenpeace



© Greenpeace

While we are in the midst of a fight in Chicago, Greenpeace provided the last push that activists in the Bay State needed to win a hard fought fight to shut down another aging coal plant. Greenpeace first visited the Salem Harbor plant along Massachusetts's North Shore in 2001, when 15 Greenpeace volunteers entered the Salem Harbor property and posted crosses in the coal pile to honor the deaths caused by the plant and call on policymakers, regulators, and the plant's owner to retire the facility.

Ten years later, Salem residents got their wish, as Greenpeace helped them overcome one last regulatory hurdle. After staging one last series of protests – which were covered by local reporters and garnered the attention of a number of state officials – New England's Independent System Organizer (ISO) – which makes decisions about the region's electricity grid – decided on May 9, 2011 to allow the Salem Harbor Power Station to close two of its coal-fired units in 2014. More importantly, it proposed upgrades to the area's local transmission system that made a complete shutdown of the plant possible by 2014.

In 2011, we will continue to work with residents of Illinois, Massachusetts, New York, Oregon and in the city of Los Angeles to retire coal plants and shape a clean energy future for these communities. Greenpeace will also inspire action to convince the Environmental Protection Agency to make the operation of coal-fired plants more expensive. Greenpeace's mobilization of citizens across the country to this point has generated some 50,000 comments on the Environmental Protection Agency's mercury rule, which could force as many as 100 plants to shut down or require plant owners to install prohibitively expensive pollution controls.



© M. Villarranca / Greenpeace



© Robert Visser / Greenpeace



© Greenpeace



# forests



# forests



## THE PARADISE FORESTS OF INDONESIA

“*Did you know there are only about 400 Sumatran tigers left in the wild? Feel a bit sick...*”

— Pop culture icon Ken (of Ken and Barbie fame) on Twitter

Tropical forests across the globe are the last refuge for hundreds of rare and endangered species, like the orangutan and the Sumatran tiger. Ancient trees in these forests and surrounding peatlands are also critically important to averting the worst effects of global warming since they store vast amounts of carbon.

The Paradise Forests of Indonesia are among the few such forested areas left standing, and they are under attack by a rapacious company known as Sinar Mas – the largest palm oil and pulp and paper conglomerate in Indonesia. Greenpeace has vowed to protect the world’s remaining tropical forests and, in 2010, set in motion a high-profile campaign to stop Sinar Mas from cutting the Paradise Forests to the ground.

Greenpeace turned the spotlight on the horrendous deforestation practices of Sinar Mas and its subsidiaries, working to convince high-profile retailers and financial institutions to end their relationships with the company. After successfully convincing Nestlé to cancel its contracts with Sinar Mas, we then turned our attention to the bank HSBC, which very quickly dropped all holdings in Indonesian palm oil producers from its global asset management groups.

Sinar Mas was so unnerved by Greenpeace’s actions, it tried to discredit our carefully researched findings by producing a highly suspicious audit of its own operations, supposedly demonstrating its commitment to sustainability. However, the plan backfired and



instead brought even more attention to its corrupt and destructive practices. When the blatantly false claims of the company came to light, fast food giant Burger King canceled contracts with the company and a key industry group – the Roundtable for Sustainable Palm Oil – demanded greater accountability. The Roundtable threatened to remove Sinar Mas from the group if it didn’t take corrective action to end its practice of destroying forest and wildlife habitat.

On February 9, 2011, Sinar Mas’s Palm Oil division, Golden Agri Resources (GAR) announced new standards to protect forests. The new policy re-commits Golden Agri Resources to leaving peatland areas intact, which are some of the most important “high carbon” areas of the Paradise Forests, and broadens its commitment to leaving other “High Carbon Stock” forests untouched. If GAR is true to its word, the company will end the worst of its deforestation practices. Greenpeace will be monitoring implementation carefully.







Unfortunately, there is a stark difference between the commitments being made by Golden Agri Resources and those of Sinar Mas's pulp and paper arm, Asia Pulp and Paper (APP).

On June 7, 2011, Greenpeace in the U.S. and around the world launched a new phase of its Paradise Forests campaign aimed at convincing Mattel, one of the largest toy companies in the world, to stop sourcing paper for their packaging from Asia Pulp and Paper.



© Daniel Beltra / Greenpeace

Greenpeace then released a dossier of carefully compiled scientific evidence – based on a Greenpeace International investigation that used forensic testing and mapping data – to show that APP is clearing rainforest from areas of critical wildlife habitat and in deep peatland. The evidence proves that Mattel is wrapping the world's most famous toy, Barbie, in rainforest destruction.

While Mattel responded quickly to Greenpeace, their assertion that it was not the “normal course of business to dictate where suppliers source materials” fell well short of concrete and substantive action to end its role in destroying the Paradise Forests. However, Mattel has temporarily removed APP from their supply chain while an investigation takes place.



© Jeremy Sutton-Hobert / Greenpeace

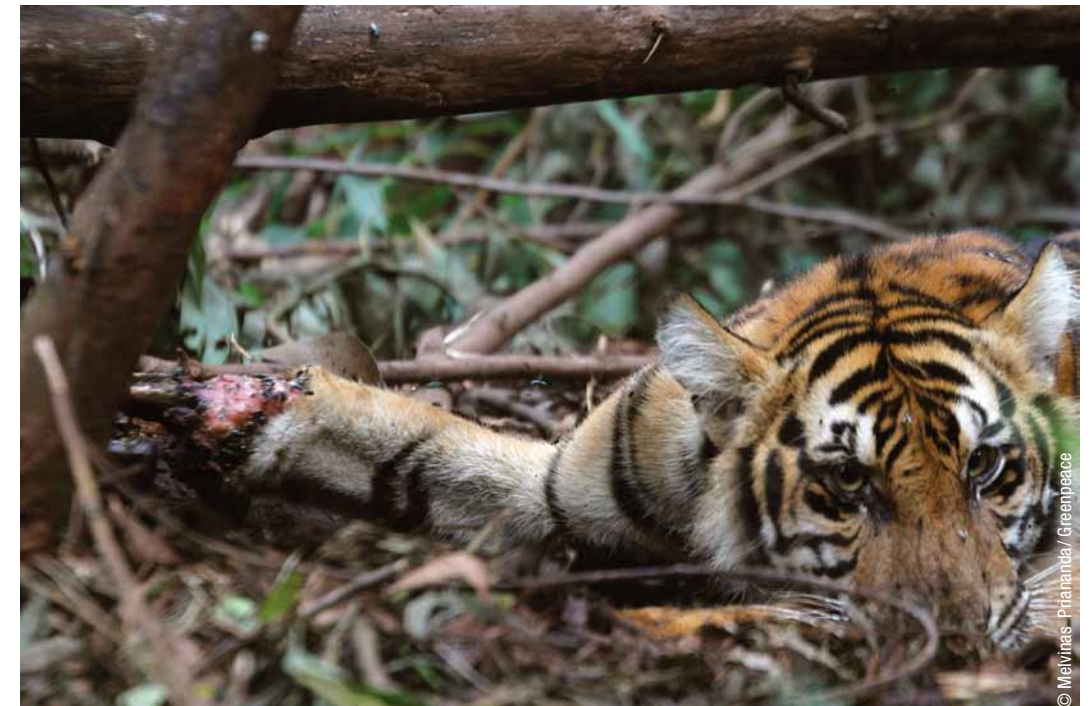
Unfortunately, Mattel is not alone when it comes to its contributions to the destruction of the world's ancient forests, even among toy manufacturers. As we have seen all too graphically over the past year, failure to properly enact genuine forest protection policies will not only cost us in trees and climate impacts, but in human lives. Greenpeace is committed to reaching its goal of zero deforestation, and to seeing a day when such sacrifices no longer need to be made.

AN ENDANGERED SUMATRAN TIGER IS CAUGHT ON THE BORDER OF AN APP PLANTATION IN THE INDONESIAN PROVINCE OF RIAU. THE TIGER DIED BEFORE IT COULD BE EVACUATED. THE SUMATRAN TIGER'S RAINFOREST HABITAT IS BEING DESTROYED, FORCING IT INTO CLOSER CONTACT WITH HUMANS AND INTO AREAS WHERE TRAPS ARE LAID FOR OTHER ANIMALS. THERE ARE FEWER THAN 400 SUMATRAN TIGERS LEFT IN THE WILD AND NEARLY 2.5 MILLION ACRES OF RAINFOREST ARE CLEARED EVERY YEAR.

Greenpeace made international headlines by announcing the break-up of Ken and Barbie at Mattel headquarters in Los Angeles. Greenpeace activists hung a banner, featuring the iconic Ken – who the company just recently reunited with his world-famous girlfriend Barbie – announcing, “Barbie, it's over, I don't date girls that are into forest destruction.” In the U.K., Greenpeace hung a similar banner from Trafalgar Square as posters popped up at bus stops around the city. Online, an animated video interview with Ken was seen by millions.



© Steve Morgan / Greenpeace



© Melvinas - Prianda / Greenpeace



# oceans



# oceans



## SEAFOOD SUSTAINABILITY

“Consumers deserve to be able to purchase seafood from retailers that care about the condition of our oceans and that properly steward our marine resources. The days of selling fish with no regard for the environment are over.”  
— Casson Trenor, Oceans Campaigner

Since its launch in 2007, Greenpeace’s campaign to improve seafood sustainability has made great strides. When Greenpeace released the April 2011 edition of *Carting Away the Oceans*, fully 15 companies had moved from the “Fail” category – where all 20 of the retailers on the survey stood when the first report was released in 2008 – to “Pass”. Greenpeace’s seafood campaign is making a difference in the industry and in the oceans.

As one seafood retail executive, who asked for anonymity, stated, “That ranking you guys do, I hate it. It takes up so much time; it has made my life a hell of a lot more difficult. But I have to tell you it’s working. And I want you to promise me that no matter what I say or what anyone else says, you’re not going to stop doing it.”

At the close of 2010, Greenpeace was continuing to pressure Costco through a wide-reaching, multi-faceted campaign that took full advantage of our strengths online and on the ground.

Our campaign continued throughout 2010, with Greenpeace continuing to pressure Costco through online actions, a satirical website and a series of videos that had the character of Costco attending (and then running away from) meetings of “Oceans Destroyers Anonymous”, a twelve-step program where her sponsor was previous Greenpeace target Trader Joe.

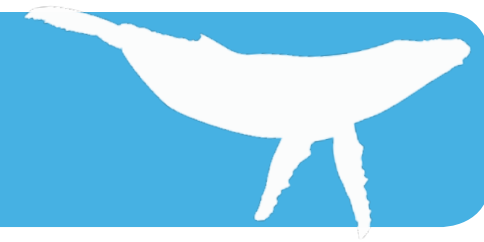


In late February 2011, Costco announced several new seafood policies including the elimination of 12 red list species (which will not return to their shelves unless the company can find a Marine Stewardship Council-certified option) and a pledge to play more of a leadership role within aquaculture. Working with an outside partner, Costco will also further examine their remaining wild-caught species, and acknowledge the role that the canned tuna industry plays within the global sustainable seafood market.

Canned tuna, the most popular seafood product in America after shrimp, is a major focus of Greenpeace’s work in 2011. While a can of tuna is relatively inexpensive, the cost to our oceans is great.







The canned tuna industry hauls in nearly four million tons of tuna annually, with tuna fishing vessels plundering the last healthy stocks of tuna on the planet. Nearly all big-eye and yellowfin tuna stocks are in danger of collapsing, and even skipjack, the most plentiful and resilient of the commercially fished tunas, is showing signs of depletion.

In addition to driving down tuna populations, the industry is putting entire ocean ecosystems in peril with the worst kinds of fishing practices. Tuna seiners commonly use dangerous and destructive objects known as fish aggregation devices (FADs) to increase their catch rate. Fish aggregation devices are floating beacons that attract marine species in search of shade, shelter, and prey. When the seiners set their nets on the FADs and the ecosystems that have built up around them, entire schools of tuna are scooped up along with tons of “bycatch” – species that are not commercially viable but are killed anyway and then thrown overboard. Juvenile fish caught in these nets are often processed with the mature tuna and incorporated right into the canned product.

Bumble Bee, Chicken of the Sea, and StarKist are the dominant forces in the U.S. tuna market, with the three companies recently coming together to launch the “Tuna the Wonderfish” promotional campaign. “Wonderfish” aims to increase national con-



© Marco Catei/ Greenpeace



© Will Rose/ Greenpeace



© Paul Hilton/ Greenpeace



© Christian Aslund/ Greenpeace

A YELLOWFIN TUNA IS LOADED ONTO A TRUCK FOR EXPORT. TODAY, NEARLY ALL YELLOWFIN TUNA STOCKS ARE IN DANGER OF COLLAPSING DUE TO INCREASED COMMERCIAL FISHING PRESSURE. GREENPEACE IS CALLING ON THE MAJOR CANNED TUNA COMPANIES TO STOP HUNTING YELLOWFIN TUNA, TO SUPPORT OUR PROPOSALS TO CREATE MARINE RESERVES IN CRITICAL TUNA HABITATS OF THE WESTERN CENTRAL PACIFIC, AND TO END THE USE OF UNSUSTAINABLE FISHING PRACTICES.

sumption of tuna, while ignoring the devastating effects that the industry is having on our oceans.

In 2011, Greenpeace will continue engaging in an international effort to draw attention to the unethical fishing practices of the industry. We'll be following tuna fishing vessels with Greenpeace ships, capturing footage of the slaughter that ensues in the pursuit of tuna. We'll work with conservation-minded grocery chain partners to put pressure on these companies to clean up their fishing practices, most notably reducing bycatch, ending the use of fish aggregation devices and ending the hunt for yellowfin tuna. And, we'll continue to share information about how Greenpeace supporters can play their part in protecting our oceans and making a difference.



# Dirty Energy's Dirty History

**On March 11, 2011** an 9 magnitude earthquake struck the island nation of Japan, triggering a tsunami with waves of up to 133 feet that, in some cases, traveled as far as six miles inland. In addition to the loss of life and destruction of infrastructure, these natural disasters touched off a series of horrifying nuclear disasters. This included a core meltdown in one of the reactors at the Fukushima I Nuclear Power Plant complex. This ongoing crisis has not only displaced or significantly disrupted the lives of hundreds of thousands of residents, but scientific testing has already revealed high levels of radioactive contamination in seaweed, shellfish and fish samples.

**On March 24, 2011**, it had been 22 years since the Exxon Valdez smothered more than 1,500 miles of coastline with 11 million gallons of oil.

Just four days later, **March 28, 2011**, was the 32nd anniversary of the partial reactor meltdown at Three Mile Island in Pennsylvania.

**April 20, 2011** marked the first anniversary of the BP Deepwater Horizon oil rig explosion, which killed eleven people, and released an estimated two hundred million gallons of crude oil into the Gulf of Mexico. Beaches were awash with oil, and dolphins, pelicans, and sea turtles suffocated under a thick coat of oil, their bodies washing up along the coast only a few months later. Today, not only is oil still in evidence on the coast, but we continue to try and understand the full impact of the unprecedented amounts of toxic dispersants that were used across the Gulf of Mexico in an attempt to mask the disaster's impact.

**April 26, 2011** was the 25th anniversary of the explosion at the Chernobyl nuclear plant, which released between 100 and 400 times more radiation than the bombs at Hiroshima and Nagasaki.

It seemed that, for much of 2010 and 2011, we were either forced to witness or asked to remember a grim roll call of energy disasters, events where, we were told, the unthinkable happened. The events in the Gulf and in Japan caught so many – corporate executives, government officials, engineers – surprised and unprepared. No one could have foreseen these situations, we were told.



Sadly, we at Greenpeace did believe these kinds of tragedies could take place. These are the disasters we've warned of for years, the reasons why we've devoted time, talents and resources to ask our decision makers to create energy policies based on science and innovation, not on the interests of profit-minded corporations and their well-funded lobbying groups.

It's why, around the world, millions of Greenpeace supporters, friends and allies are standing together to move us away from oil, nuclear power, and coal, and toward a clean and renewable energy future.

While it is painful to remember the energy disasters that have marked 2010 and 2011 in various ways, their anniversaries must be marked and remembered, not only for the families affected, the lives and livelihoods lost, but to serve as a reminder of the risk we take when we refuse to move forward.

This past year you helped us send the message – whether online, in the streets, from the Gulf of Mexico or the top of a smokestack in Chicago – that it is time for something different. In the coming year, we will continue to share that message loudly and clearly. To quote Greenpeace's international Executive Director Kumi Naidoo, "No More Chernobyls. No more Fukushimas. Never again."



**With your support, Greenpeace is bringing the world closer to realizing a true clean energy future:**

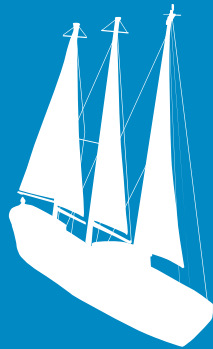
- Thanks to a decade of hard work by local residents, and with the support of Greenpeace, the Salem Harbor coal-fired plant is now scheduled for shut down in 2014. A Harvard School of Public Health study previously linked the plant to 53 premature deaths a year.
- In Los Angeles, two members of the city council – Paul Koretz and Bill Rosen-dahl – have signed on to a pledge to make the city coal-free by 2020. They join 200 business and a broad coalition of Los Angeles residents who want to see their city lead the way with clean energy and renewables.
- Determined to see the dangers posed by the aging Vermont Yankee – which have included an ongoing tritium leak and a cooling tower collapse – eliminated, Greenpeace is continuing to work alongside Vermonters to ensure the nuclear power plant is shut down, as scheduled, in 2012.
- Japan, Germany and Switzerland have announced their plans to phase out nuclear reactors while, in Italy, 95% of voters on a referendum about nuclear power in the country voted in favor of a future free of the false promises and immense threat posed by nuclear energy.



# MORE THAN EVER THE WORLD NEEDS HOPE, IT NEEDS ACTION, IT NEEDS A RAINBOW WARRIOR.

— Kumi Naidoo,  
Executive Director of Greenpeace International

Aboard a tiny halibut fishing boat with a scarred wooden deck and a jury-rigged engine, Greenpeace was born. That was 40 years ago, when the *Phyllis Cormack*, renamed *Greenpeace*, carried a crew of activists, journalists, and rugged fishermen into stormy Arctic waters toward Amchitka Island, which had been targeted by the U.S. government for nuclear testing.



That voyage launched an international movement and, ever since, Greenpeace ship expeditions have shaped our approach to environmental activism. For 40 years, scientists, photographers, and journalists, among others, have joined Greenpeace campaigners to travel to every corner of the earth and put themselves at risk to stop any number of environmental crimes – nuclear testing, whaling, seal hunts, dumping of toxic waste, the illegal sale of endangered trees, pirate fishing, and deepwater oil and gas drilling.

Greenpeace's activism on the high seas is also shaped by a prophecy discovered by journalist Bob Hunter, one of the founders of Greenpeace and later its president, who was perusing a book of Native American stories while on Greenpeace's maiden voyage to Amchitka. As the boat pitched, he read:

"There will come a time when the earth grows sick, and when it does a tribe will gather from all the cultures of the world who believe in deeds and not words. They will work to heal it... they will be known as the 'Warriors of the Rainbow'."

Deeply inspired, Bob incorporated the story into his news articles chronicling that journey and, today, the term "Rainbow Warrior" has many layers of meaning for Greenpeace, all tied to the ships we have sailed and their courageous crews.

It was the name of Greenpeace's second ship, a converted research vessel refurbished by Greenpeace volunteers. For seven years, the ship intercepted whaling ships, drew attention to attempts to dump toxic waste into the sea, prevented hunters from slaughtering seals, and even relocated Pacific Islanders who had lived on Rongelap Atoll, a tiny island contaminated by nuclear testing.

The adventures of the *Rainbow Warrior I* ended in violence and death in 1985, when agents of the French government snuck on board with two bombs when the ship was docked in Auckland Harbor. They had been given orders to stop the boat from leading a peaceful protest against the nuclear testing sanctioned by the French. The bombs sunk the ship and drowned Greenpeace photographer Fernando Pereira.

The bombing was a horrible failure for the French government, as citizens across the world resolved to resurrect the spirit of the ship and fulfill the Rainbow Warrior legend.

Just four years after  
the bombing,



the *Rainbow Warrior II* unfurled its sails and began its own journey across the high seas. For more than 20 years, *Rainbow Warrior II* has been the flagship of Greenpeace's growing fleet of activist vessels that now travel the sea and air – including the *Esperanza*, the *Arctic Sunrise*, the *One World* air balloon, and the *A.E. Bates* thermal airship.

After many of its own adventures – including intercepting transports of nuclear materials and blocking the export of illegal timber – Greenpeace is retiring *Rainbow Warrior II*. In its place, we are building a first-of-its-kind environmentally friendly ship designed exclusively for Greenpeace's activist expeditions. We are building the 21st Century *Rainbow Warrior*.

The *Rainbow Warrior III* – which will launch on a tour of European waters this fall on Greenpeace's 40th anniversary – will meet the highest environmental standards, with unique specifications for its mission. Greenpeace offices across the world were canvassed for a comprehensive list of features. Among the features built for the ship are:

- a hull shaped for maximum fuel efficiency and masts made from recycled aluminum;
- an ultra efficient hybrid engine, which will only be used about 20 percent of the time, since the boat will be primarily powered by its five massive hydraulic sails;
- a ventilation system that circulates heat from the engine to cabins, galley, and other common rooms;
- a helicopter landing pad; and,
- the most sophisticated communications system on the high seas, including both radio and satellite capability to broadcast events on the water as they are happening.

Peter Wilcox, the captain of the *Rainbow Warrior I* when it was bombed, will take the helm of *Rainbow Warrior III* when it sails to the Americas in 2012, steering the ship on its maiden voyage up the Amazon River as part of the international effort to protect one of the last tropical forests in the world. He is one of Greenpeace's most courageous Rainbow Warriors (among many) who will continue to live the prophecy until we realize a green, peaceful future.

*The thing I remember most [about the bombing of Rainbow Warrior I]... was that we set up an office to try to deal with stuff, and that afternoon people started arriving. Someone brought bags of clothes for us... Someone set up a little kitchen in the office to feed the crew. Then people came with buckets of cash for us that they had collected on the street. They were giving, they said, for us to build a new boat. To keep on going.*

— Steve Sawyer,  
former Greenpeace  
campaign leader  
reflecting on the  
bombing of *Rainbow  
Warrior I* in Auckland  
Harbor in 1985



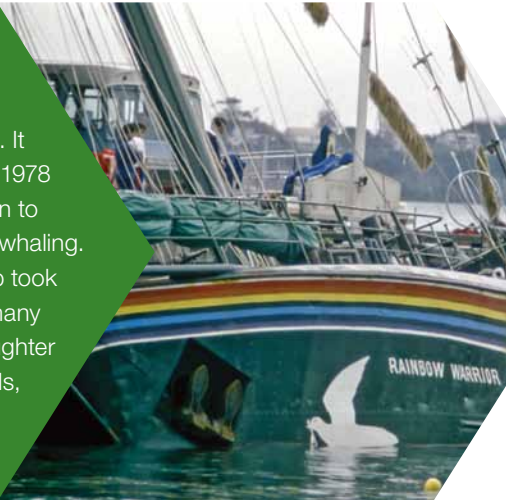
# Rainbow warrior



A crew of journalists, activists, and seasoned fishermen set sail on the *Phyllis Cormack* in 1971 to stop nuclear testing on Amchitka island. As described by Rex Weyler, another Greenpeace founder: "The *Phyllis Cormack* cut through the calm water...sound and stately...The Greenpeace symbols – a peace sign and an ecology sign – appeared on a great, pale-green, triangular sail, fixed to the mast and to a boom..."



Greenpeace's second ship, the *Rainbow Warrior I*, was a rusty research vessel refurbished by volunteers in just three months. It set sail on its first mission in 1978 to Iceland to bring attention to and protest commercial whaling. For seven years, the ship took on massive whalers and many governments to end the slaughter of whales and the hunt for seals, and to stop nuclear testing once and for all.



In 1985, *Rainbow Warrior I* sunk to the bottom of New Zealand's Auckland Harbor while on a mission to protest against nuclear testing in the South Pacific – destroyed by bombs placed on the waterline by two agents of the French government. Photographer Fernando Pereira was killed trying to retrieve his cameras below deck before the ship sank. The ship could not be salvaged and eventually became a living reef in Matakauri Bay in New Zealand's Cavalli Islands.



In 1988, Greenpeace proved that "You can't sink a rainbow" by launching *Rainbow Warrior II*. For 20 years, the ship has traveled all over the world to bear witness to and stop environmental crimes.



At the end of 2011, Greenpeace will launch the *Rainbow Warrior III* – the first state-of-the-art, eco-friendly ship built for activism. Features include massive, hydraulically powered sails, an ultra-efficient engine, and the most sophisticated communications system on the high seas. Immediately after its launch the *Rainbow Warrior III* will promptly embark on a European tour. Plans are currently in development for the ship's first visit to the U.S.



photos from left to right top to bottom: Keziere, C. Dees, Lorette Dorreboom, Miller, John Javellana, Paul Hilton, Christian Åslund, Malcolm Pullman, Oliver Tjaden/ Greenpeace



## Greenpeace in the United States

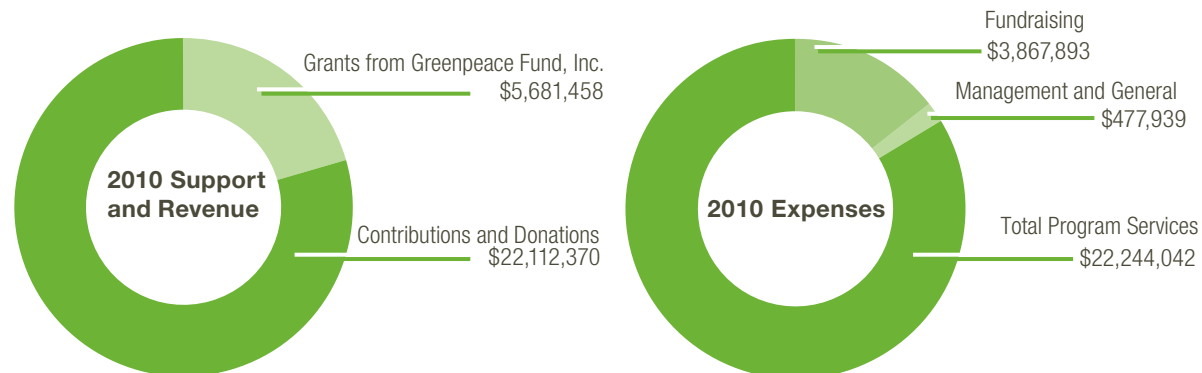
In the United States, Greenpeace fulfills its role in protecting the environment through two corporate entities: Greenpeace, Inc., a nonprofit organization formed under Section 501(c)(4) of the Internal Revenue Code, and Greenpeace Fund, Inc., a nonprofit organization formed under Section 501(c)(3) of the Internal Revenue Code.

Greenpeace, Inc. furthers its mission of protecting the environment through research, advocacy, litigation, and lobbying (direct and grassroots). The organization also bears witness to environmental degradation and takes action to prevent it. Contributions to Greenpeace, Inc. are not tax-deductible.

The mission of Greenpeace Fund, Inc. is to promote and protect the environment through research and public education. Greenpeace Fund, Inc. also makes grants to other nonprofit organizations for activities that are consistent with its mission. Contributions to Greenpeace Fund, Inc. are tax-deductible.

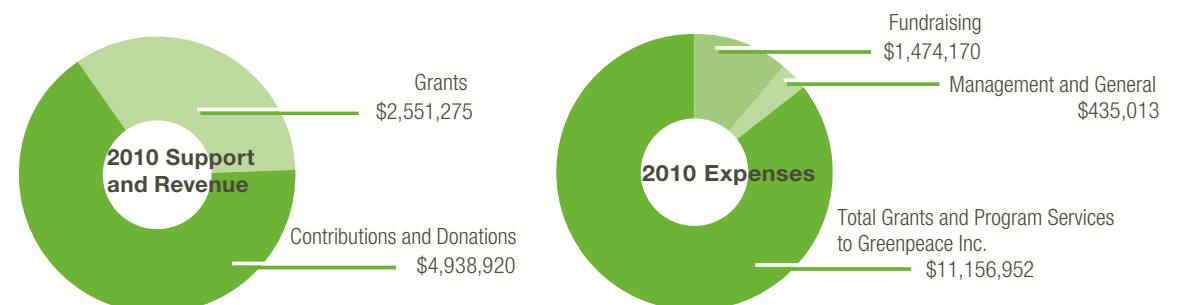
## Greenpeace, Inc. Statement of Activities (year ended December 31, 2010 and 2009)

	2010	2009
<b>Support and Revenue</b>		
Contributions and Donations	\$ 22,112,370	\$ 20,414,573
Investment Returns	3,090	4,557
Grants from Greenpeace Fund, Inc.	5,681,458	5,618,129
Licensing, Royalties and Merchandise	19,866	9,671
Net Assets Released from Restrictions	0	284,532
<b>Total Support and Revenue</b>	<b>27,816,784</b>	<b>26,331,462</b>
<b>Expenses</b>		
<b>Grants and Program Services</b>		
Oceans Campaign	5,035,229	3,689,147
Climate Campaign	2,350,660	3,528,430
Forests Campaign	3,618,113	3,754,711
Action Resources	1,798,445	2,035,530
Outreach Campaign	3,489,674	3,508,948
Toxics Campaign	1,110,588	2,254,636
Public Information and Education	4,778,658	3,714,418
Other Campaigns	62,675	67,563
<b>Total Program Services</b>	<b>22,244,042</b>	<b>22,553,383</b>
<b>Support Services</b>		
Fundraising	3,867,893	4,184,136
Management and General	477,939	304,635
<b>Total Support Services</b>	<b>4,345,832</b>	<b>4,488,771</b>
<b>Total Expenses</b>	<b>26,589,874</b>	<b>27,042,154</b>
Temporary Restricted Net Assets	0	-284,532
<b>Change in Net Assets</b>	<b>1,226,910</b>	<b>-995,224</b>
Net Assets (beginning of year)	-16,197	979,027
<b>Net Assets (end of year)</b>	<b>\$ 1,210,713</b>	<b>\$ -16,197</b>



## Greenpeace Fund, Inc. Statement of Activities (year ended December 31, 2010 and 2009)

	2010	2009
<b>Support and Revenue</b>		
Contributions and donations	\$4,938,920	\$5,654,702
Investment Returns	280,761	-1,821,177
Grants	2,551,275	1,142,808
Asset Sale	0	0
Other Income	0	2,500
Net Assets Released from Restrictions	580,000	205,000
<b>Total Support and Revenue</b>	<b>8,350,956</b>	<b>5,183,833</b>
<b>Expenses</b>		
<b>Grants and Program Services</b>		
<b>Grants to Stichting Greenpeace Council</b>		
Oceans Campaign	1,843,270	5,045,927
Forests Campaign	1,446,258	519,514
Climate Campaign	1,693,999	4,652,212
Agriculture and Water Campaign	1,063,425	0
<b>Total Grants to Stichting Greenpeace Council</b>	<b>6,046,952</b>	<b>10,217,653</b>
<b>Grants to Greenpeace, Inc.</b>		
Oceans Campaign	2,377,000	700,000
Forests Campaign	700,000	100,000
Climate Campaign	1,500,000	4,800,000
Toxic Campaign	350,000	0
Nuclear Campaign	23,000	0
Other	160,000	0
<b>Total Grants to Greenpeace Inc.</b>	<b>5,110,000</b>	<b>5,600,000</b>
<b>Total Grants and Program Services</b>	<b>11,156,952</b>	<b>15,817,653</b>
<b>Support Services</b>		
Fundraising	1,474,170	1,304,057
Management and General	435,013	503,504
<b>Total Support Services</b>	<b>1,909,183</b>	<b>1,807,561</b>
<b>Total Expenses</b>	<b>13,066,135</b>	<b>17,625,214</b>
Temporarily Restricted Net Assets	-240,000	275,000
<b>Change in Net Assets</b>	<b>-4,955,179</b>	<b>-12,166,381</b>
Net Assets (beginning of year)	14,081,889	26,248,270
<b>Net Assets (end of year)</b>	<b>9,126,710</b>	<b>14,081,889</b>

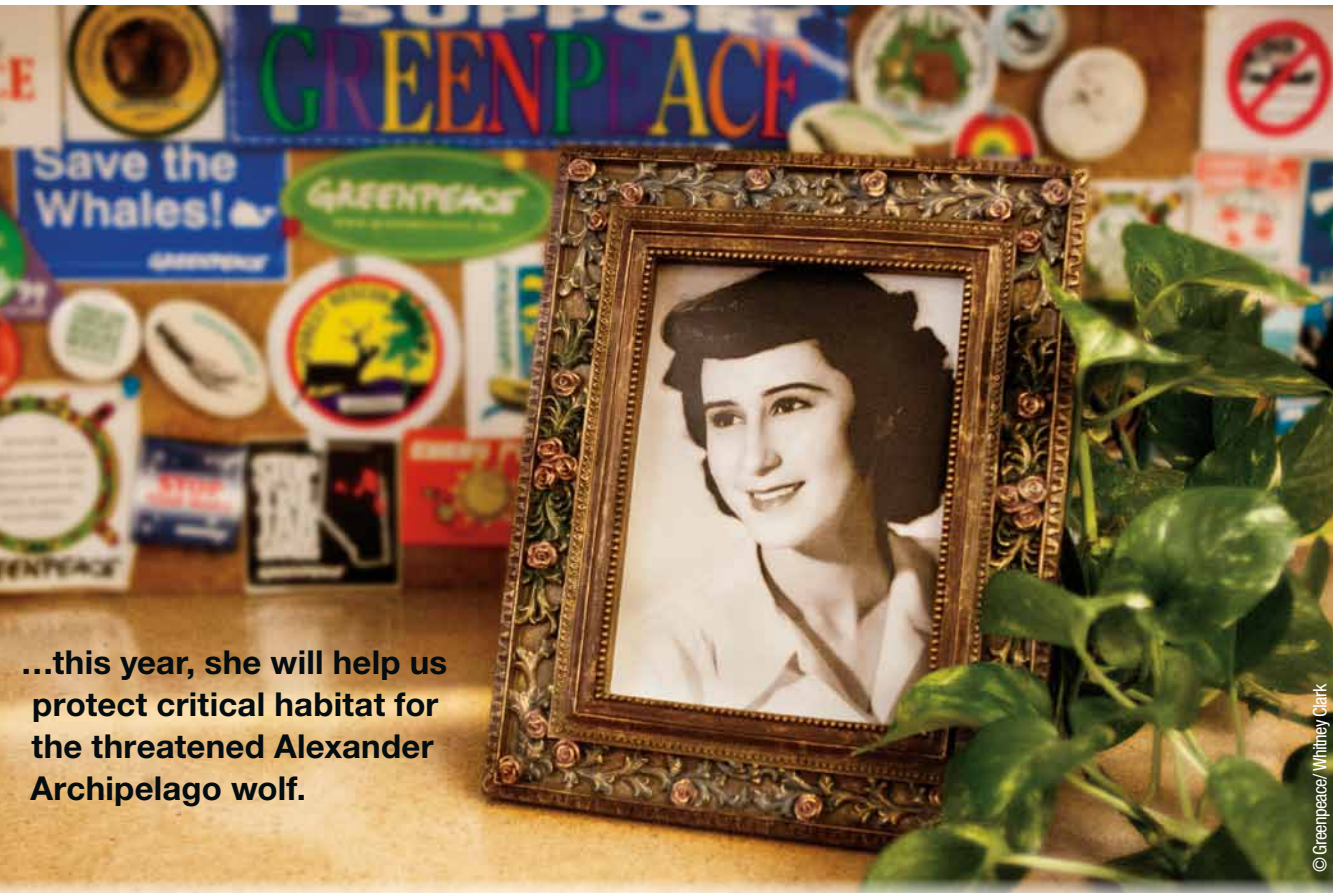


## Greenpeace Independence

To maintain independence, Greenpeace, Inc. and Greenpeace Fund, Inc. do not solicit or accept funds from corporations or from governments. Financial independence is core to our work and one of our greatest strengths. It gives us the ability to take on environmental problems wherever and whenever they occur. This independence is possible because individuals like you are part of a family of more than three million members worldwide.



# Greenpeace supporter Estella Marie Howe died in 2005...



© Greenpeace/Whitney Clark

...this year, she will help us protect critical habitat for the threatened Alexander Archipelago wolf.

Estella Howe had a life long love of all animals. She lived in Alaska before it was a state and was very taken with the beauty of that place. Ms. Howe was very upset when oil exploration started and the oil pipeline was built. She was concerned about the impact on the wildlife and wanted to see the area protected.

Ms. Howe liked the work that Greenpeace had done to halt further oil exploration in Alaska and the work to protect the forest habitat of the wildlife there. Her niece described her as an activist who wrote to her representatives often about the issues that concerned her because she wanted to fix things that she saw as a problem. She also had a good sense of humor and put every sticker she received from environmental groups on her front door for everyone to see. She had hundreds of them.

Ms. Howe wanted to leave a legacy by quietly saving money during her lifetime to make a difference after her life. Her bequest to Greenpeace will help us continue our work for a green and peaceful future.

# Create Your Legacy for the Earth

Planning a legacy or alternative way of giving can provide the resources that create extraordinary opportunities for you and help preserve our future. By planning for your legacy, you can provide for your loved ones as well as for Greenpeace and our fragile Earth.

## Legacy Gifts

You can easily show your commitment to tomorrow by remembering Greenpeace Fund in your will or living trust, today. These gifts provide a legacy of continuing support for Greenpeace Fund.

Naming Greenpeace Fund as a beneficiary to receive part or all of life insurance proceeds or retirement plan remainders is a simple way to make a significant gift.

## Gifts that Provide an Income to You or Inheritances to Loved Ones

Did you know that it is possible to make a gift for the eventual benefit of Greenpeace Fund while first retaining income for you, your spouse, and/or other loved ones? In fact, you can choose from among a number of ways to give that feature income for life or other period of time you choose.

There is also a way to make special charitable gifts to Greenpeace Fund using funds that are eventually returned to you or your loved ones at a future time of your choosing.

## Making Gifts of Property

If you own stocks, mutual funds or other securities that are worth more than you paid for them and you have owned for longer than one year, you may wish to consider using them to make your gift to Greenpeace Fund. Certain gifts of real estate can also make excellent charitable gifts. It is even possible to give the remainder interest in your home to Greenpeace Fund while continuing to live there for life. Such gifts can result in tax savings with little or no effect on your spendable income.

These are just some of the other ways to support Greenpeace and continue our work for future generations. Learn more at our website [greenpeacefund.org](http://greenpeacefund.org).

### Contact Us for More Information

Greenpeace Fund, Inc. Federal Tax ID #95-3313195

#### Gift Planning Director: Corrine Barr

Phone: 1-800-328-0678  
Email: [corrine.barr@greenpeace.org](mailto:corrine.barr@greenpeace.org)

#### Gift Planning Specialist: Tamara Lane

Phone: 1-800-621-6038  
Email: [tamara.lane@greenpeace.org](mailto:tamara.lane@greenpeace.org)

*Provided for informational purposes only and should not be considered legal, accounting, or other professional advice.*

### Alexander Archipelago wolf

*A rare and beautiful subspecies of timber wolf found only in the Tongass National Forest in Alaska. In 2008, Greenpeace began an ongoing campaign to protect the wolves' critical habitat from logging.*



2007 © John Hyde









# GREENPEACE

[greenpeace.org](http://greenpeace.org)

## **Washington, DC**

702 H Street NW, Suite 300  
Washington, DC 20001  
800.326.0959

## **San Francisco, CA**

75 Arkansas Street, Suite 1  
San Francisco, CA 94107  
415.255.9221

[greenpeace.org](http://greenpeace.org)  
[greenpeacefund.org](http://greenpeacefund.org)