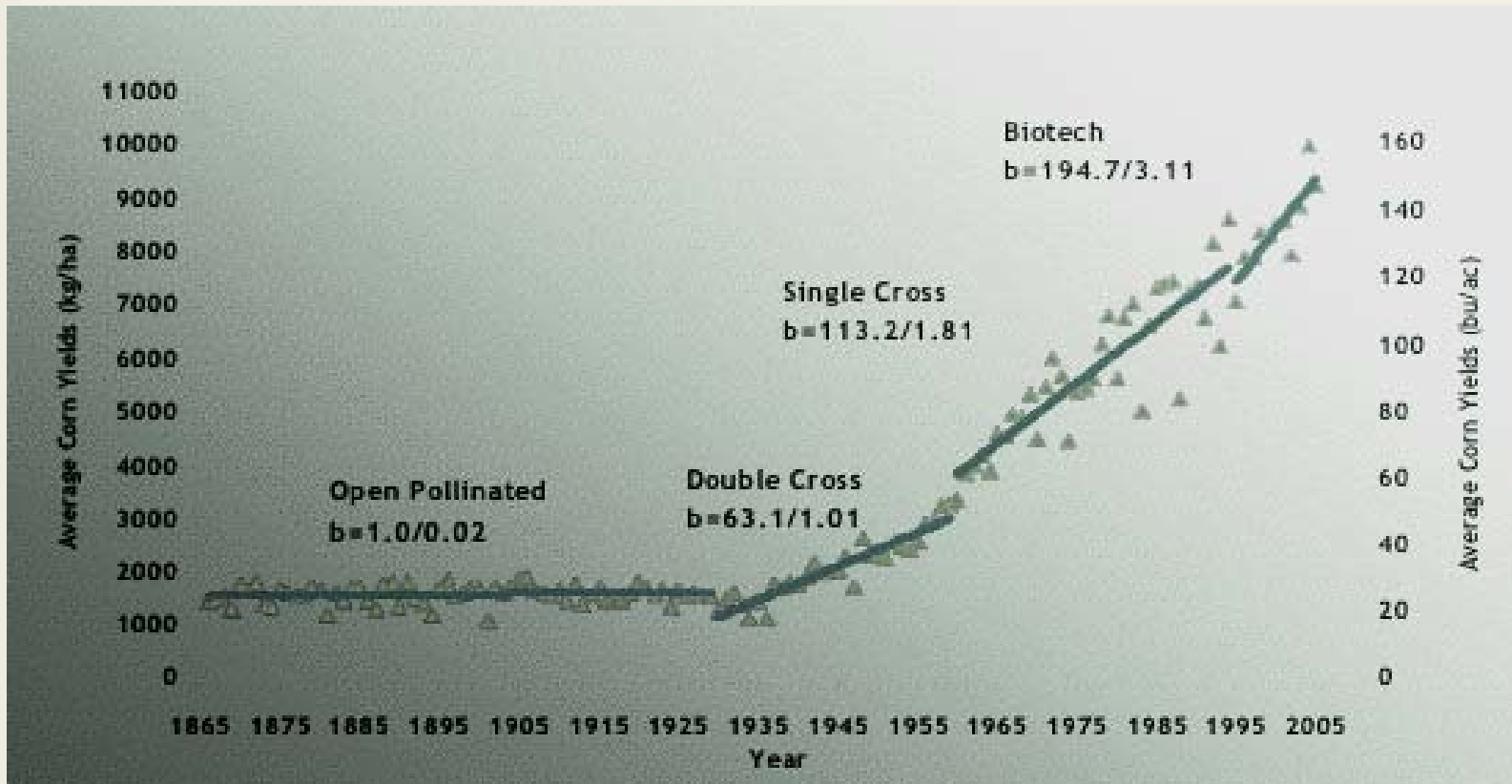


In the US maize yields have accelerated in the last ten years

- actual breeding plus cultural practice gain



Average U.S. corn yields and kinds of corn, CivilWar to 2004. "b" values (regressions kg bu²¹) indicate production gain per unit area per year (USDA-NASS, 2005)

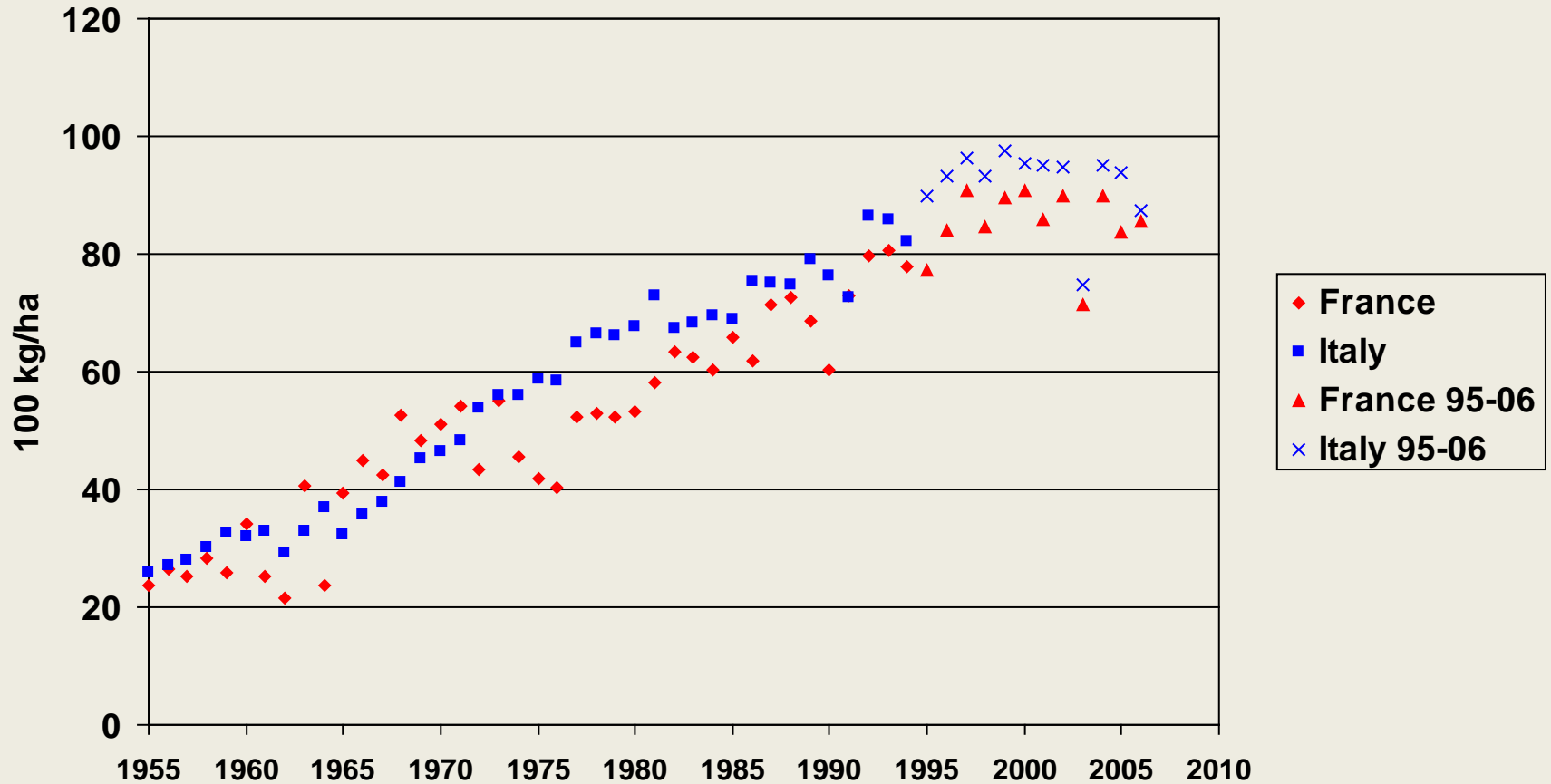
Troyer, A.F. (2006)

Adaptedness and Heterosis in Corn and Mule Hybrids. *Crop Science*, 46, 2, pp 528-543

<http://crop.scijournals.org/cgi/content/abstract/cropsci;46/2/528> AND

<http://www.botanischergarten.ch/Bt/Troyer-Adaptedness-Heterosis-2006.pdf>

corn yields in France and Italy in the last 10 years fail to show the same trend



Source; Eurostat