



Geographic distribution of *Petunia* species



P. axillaris spp.

- P. axillaris* S1, S2
- P. parodii* S7, S8
- P. nyctaginiflora*



P. integrifolia spp.

- P. integrifolia* S14
- P. inflata* S6
- P. violacea* S10
- P. occidentalis*

P. hybrida arose through wide crosses between sympatrically isolated sub-species

Petunia integrifolia
spp. *inflata*



Petunia axillaris
spp. *parodii*

dTph1 transposition system of *Petunia hybrida* line W138

an1^{mut}
an1^{mut}



an1st
an1st



An1^{rev}
an1^{mut}



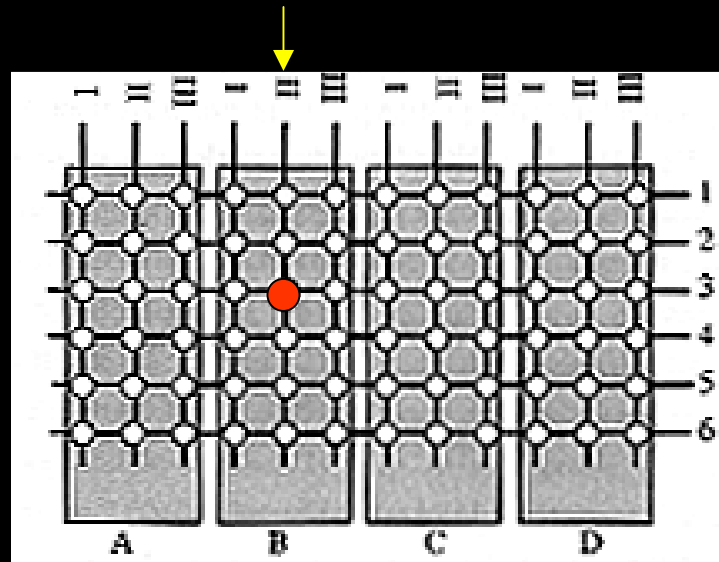
an1^{p-st}
an1^{mut}



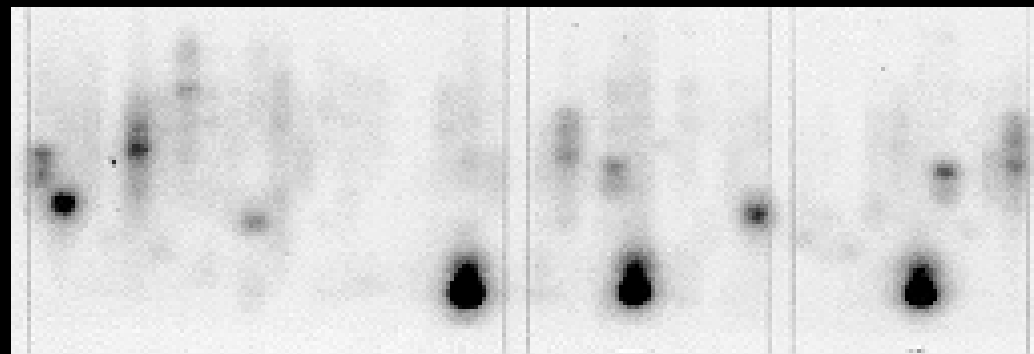
‘saturation’ mutagenesis with *dTph1*



3D reverse genetic screens



unique identifier:
3; II; B



2000 W138 individuals, 100 families

University of Berne

- PIUB

Urs Fischer

Emmanuel Hänggi

Tatiana Glagotskaia

Pia Stieger

Raffaele Mazza

Jeroen Stuurman

Cris Kuhlemeier

- Botanical Garden

Free University Amsterdam

Ronald Koes

Jos Mol

Erik Souer

